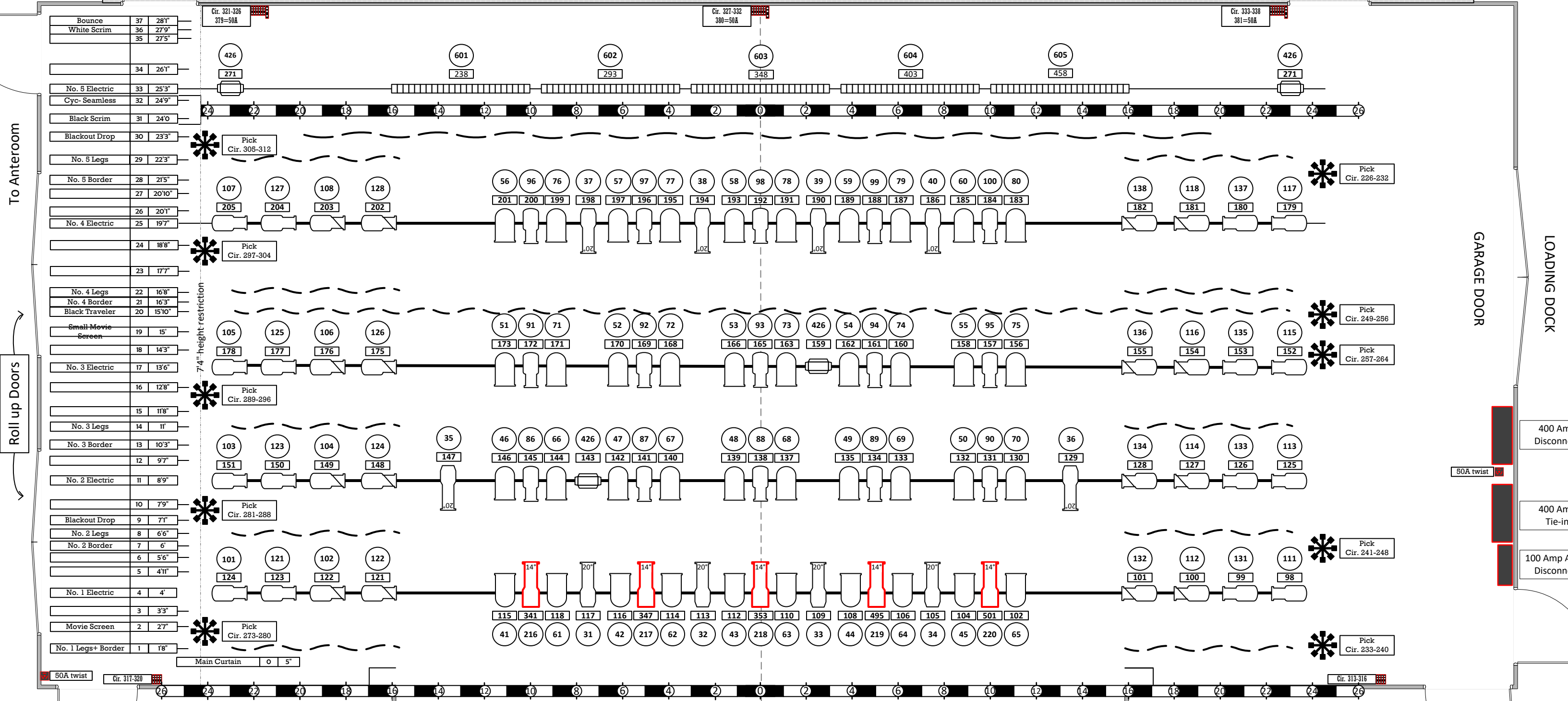


# UPSTAGE CROSSOVER








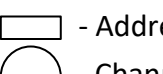
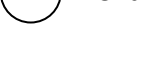
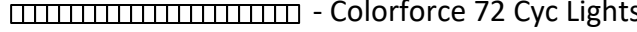
## Apron

**FLETCHER HALL  
FRONT OF HOUSE  
LIGHT PLOT**



Last Update:  
12/02/2021  
  
Contact:  
Josh Keeney  
Co-Technical Director  
919-226-8882  
Josh@carolinatheatre.org

**KEY**

 - PAR 64	 - Altman 40°	 - Altman 30°
 - Colortran 20°	 - ColorSource Spot 14°	 - Address #
	 - Channel #	
<small>Direct mode 6 channel</small>		
 - Colorforce 72 Cyc Lights		