

DS Apron



FLETCHER HALL FRONT OF HOUSE LIGHT PLOT

Last Update:
12/02/2021
Contact:
Josh Keeney
Co-Technical Director
919-226-8882
Josh@carolinatheatre.org

PIT

KEY

- Colortran 15°
- Colortran 20°
- 6" Fresnel
- Altman 50°
- ColorSource Spot 14°
- Address
- Channel
- Altman 6x9

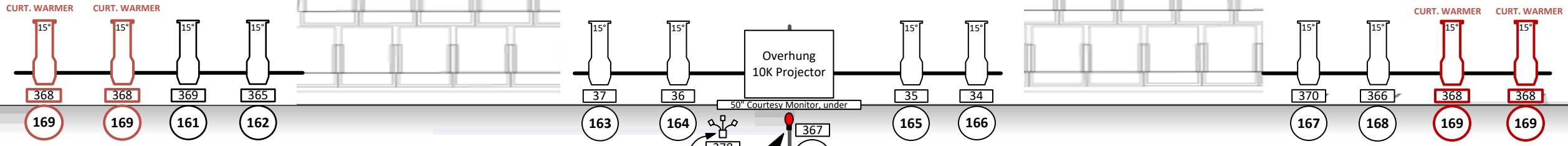
Crowd Blinders

Crowd Blinders

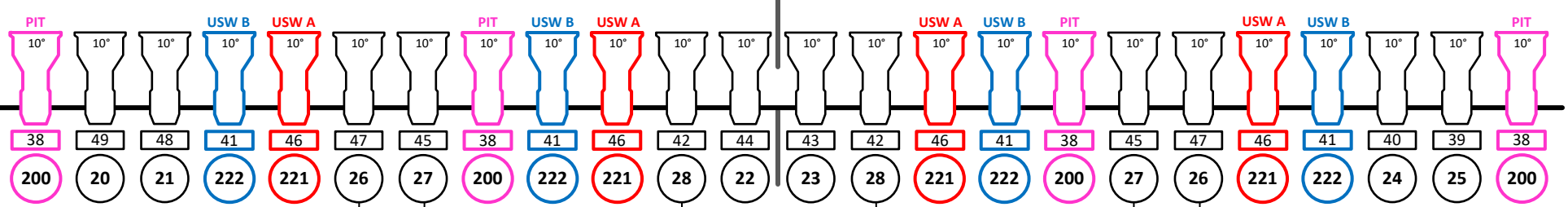
Do Not Use

Do Not Use

FIRST BALCONY RAIL:
DIST. FROM ORCH. FLR: 51'5"
THROW: 64'
ANGLE:60°



SECOND BALCONY RAIL:
DIST. FROM ORCH. FLR: 33'2"
THROW: 66'
ANGLE:40°



NOTE: COLOR-CODING INDICATES FIXTURE PURPOSE, NOT FIXTURE COLOR

Cove overhung Stair Specials

FOH COVE: DISTANCE FROM ORCH. FLR: 51'5"
THROW: 64'
ANGLE:60°

